

Improving Transportation with Data and Innovation

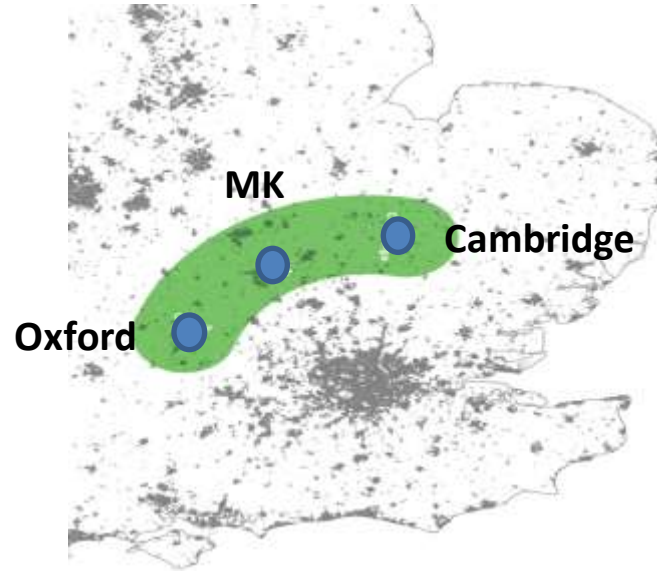
Geoff Snelson
Director of Strategy & Futures
Milton Keynes Council



Milton Keynes – strategic location



London:	88 km
Birmingham:	110 km
Oxford:	74 km
Cambridge:	77 km



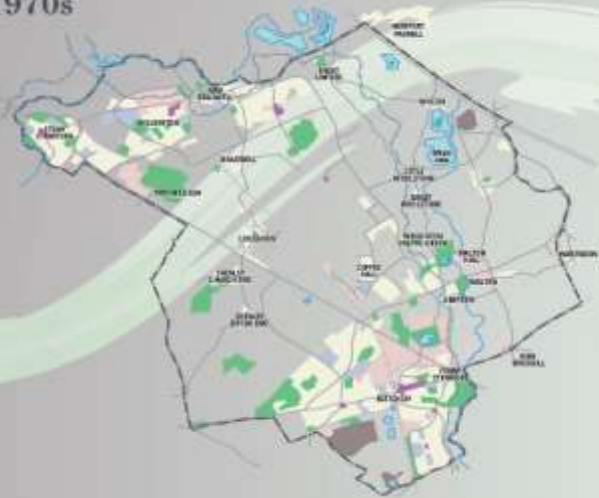
**Cambridge - Milton Keynes - Oxford
Innovation Corridor**

1960s

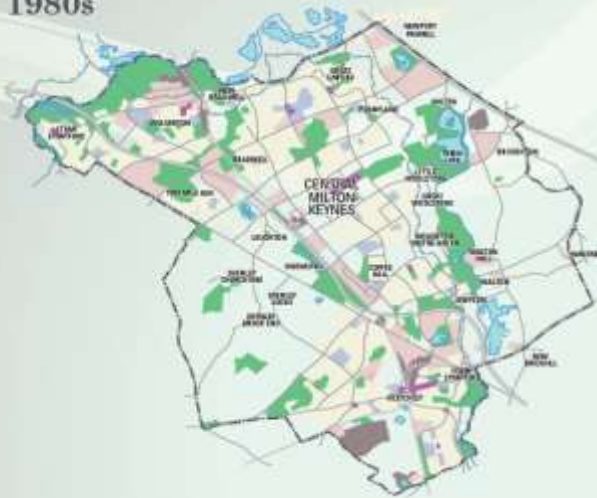


1967 pop:70,000

1970s



1980s



1990s



2000s



2010 and beyond



2018 pop: 270,000

Towards a 2050 Spatial Framework

Three development options:

- 1 Grow the Grid
- 2 Rail-based public transit oriented development
- 3 New transit communities

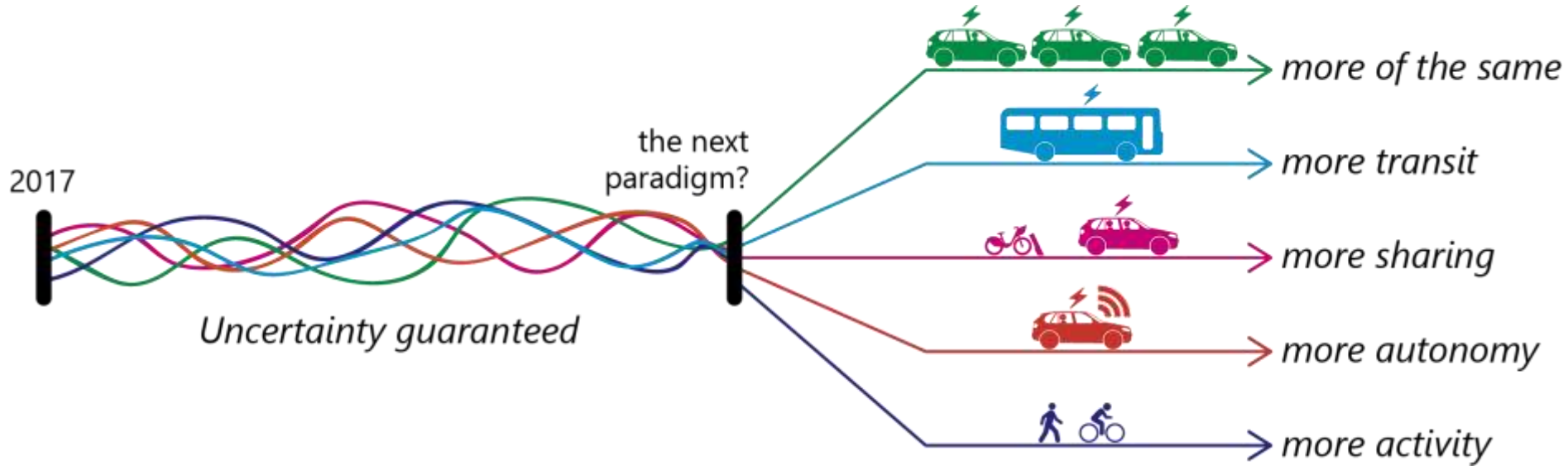


Estimated population growth:

2018 = 270,000

2050 = 500,000+

Future Mobility Roadmap



Low Carbon Mobility



Milton Keynes EV Experience Centre
UK's first multi-brand centre to promote electric cars



City centre:
170 charge posts



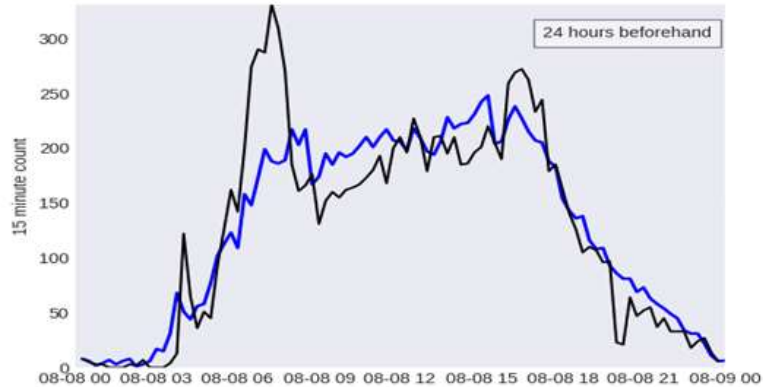
50 rapid chargers
city wide



Rapid charge "filling station"
at M1 motorway junction

Motion & parking sensors

- **City scale deployment**
 - 1816 car park sensors (13,000 spaces)
 - 445 junction sensors cover all city road network



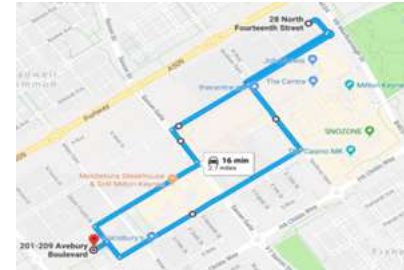
Connected cars

- Electronic Emergency Brake Lights
- Emergency Vehicle Warning
- Collaborative Parking



Autonomous driving

- City centre loop, including roundabouts
- Respond to traffic lights
- Overtake slower moving vehicles
- Valet parking



Autopods: Low Speed Autonomous Transit

“Last mile” solution for pedestrian and campus settings

NOW



2016/17:
research
trials



2018: public
transport
service test
of 40 pods

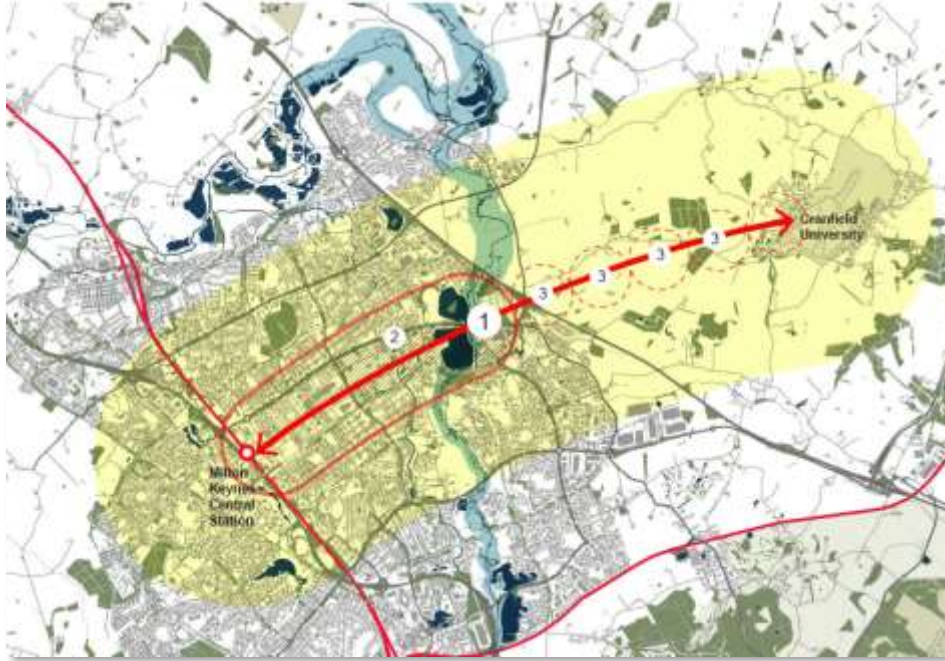
FUTURE?



Larger vehicles for
longer distances in
development

UKAutodrive

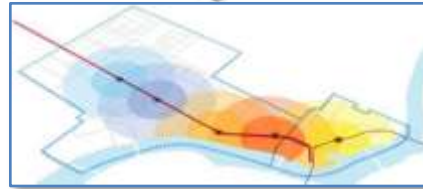
Mass transit planning



*More walkable
city centre*



*Autopods, cycles &
walking for “last
mile” journeys*



*Denser development around transit
interchanges*



*Shared small bus on
demand service for
“suburbs” & rural*



*Autonomous mass
transit/cars on urban
express routes*